

PART OF THE NORTH 1/2, OF SECTION 7, T.7N., R.1E., S.L.B. & M.

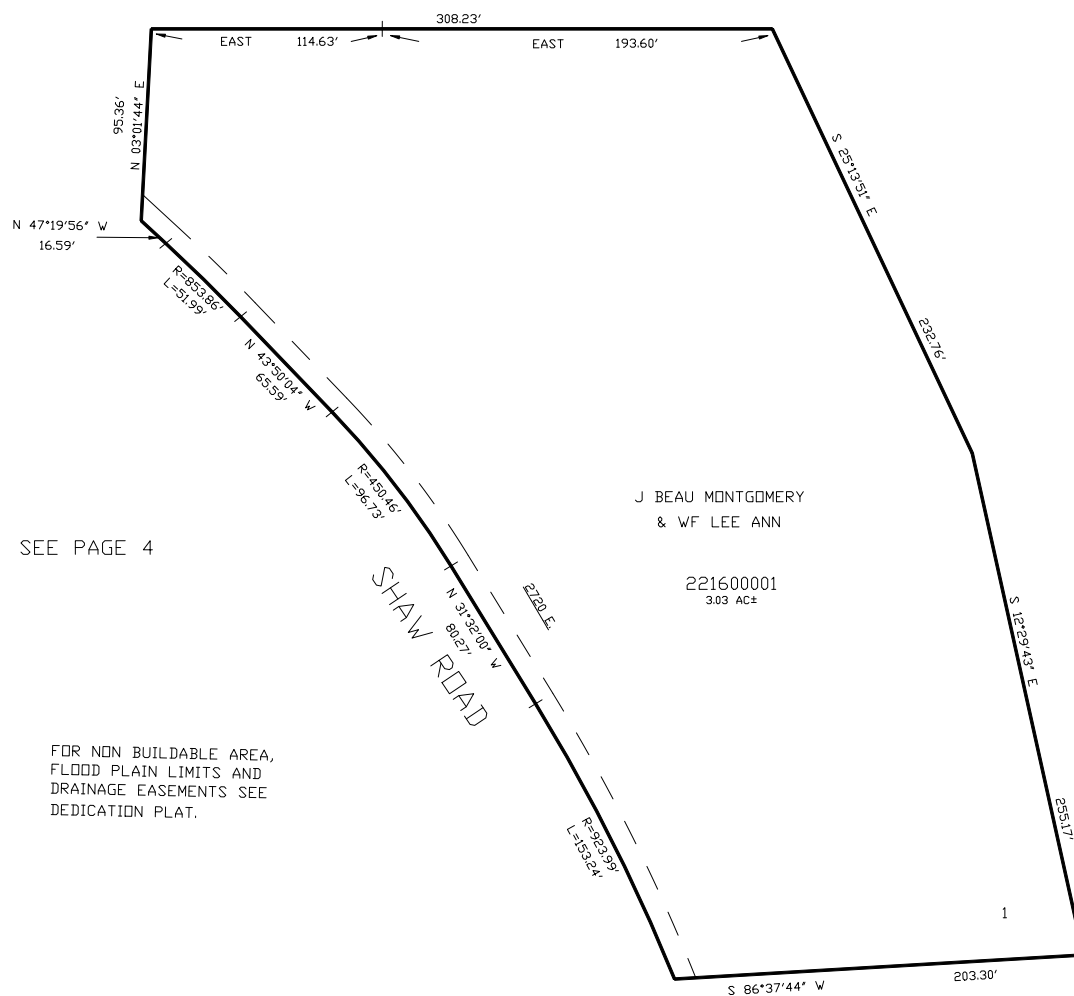
MONTGOMERY MOUNTAIN SUBDIVISION

IN WEBER COUNTY

TAXING UNIT: 36

SCALE 1" = 50'

SEE PAGE 4-1



SEE PAGE 4-1

SEE PAGE 4

FOR NON BUILDABLE AREA,
FLOOD PLAIN LIMITS AND
DRAINAGE EASEMENTS SEE
DEDICATION PLAT.

FOR COMPLETE ENG DATA SEE
ORIGINAL DEDICATION PLAT IN
BOOK 50, PAGE 32 OF RECORDS.

10' UTILITY & DRAINAGE EASEMENTS EACH
SIDE OF PROPERTY LINES AS INDICATED
BY DASHED LINES EXCEPT AS OTHERWISE
SHOWN.

SEE PAGE 4-2